



25th Anniversary Celebration & Annual Juried Exhibition

The Peninsula Glass Guild's Silver Anniversary year was concluded with an impressive roster of events. Congratulations to all of the members who contributed and participated in this celebration of the guild's 25 years of growth and success. A total of 45 guild artists

participated in the Annual Juried Exhibition and were honored to have Paul Marioni as juror.

Best in Show Jude Schlotzhauer

Hampton Arts Commission Award
Heather Hartle

Second Place Hannah Kirkpatrick

Third Place Charlotte Potter

Award of Excellence

Erna Cook
Carolyn Riley

Honorable Mention

Ed Francis
Grant Garmezy
Phillip Nolley
Bill Pinkham

Educational Scholarship Awards

Joshua DeWall
Emilio Santini
Liesl Schubel



Best in Show 2012

Jude Schotzhauer

Reliquary Box with Ladders

The Best in Show Award winner is given the honor of a solo presentation during the 2013 Annual Juried Exhibition.

Members gather at a holiday cocktail party in honor of juror Paul Marioni at the home of Dick and Carolyn Barry Friday December 7.

The guild is very appreciative of the invitation to visit the Barry's lovely home and view their extensive glass art collection.



Hostess Carolyn Barry shares the collection with Charles H. Taylor Art Center Gallery Manager James Warwick Jones.



Julie Rogers and Kathy Little



Silver Anniversary Events

*The Genesis of Women:
Glass by Kathy Little*



Adornment

Did woman materialize from rib of man as scripture reads? Today's woman is an evolutionary wonder. Adapting to situations & experiences, social status & hierarchy, poverty & wealth, sickness & in health. The climb of woman in every aspect of life is without limit. Focusing on body image, my fascination with the human body and its functions, the way the body can accommodate or transform to different life styles or natural creation. The changing girth of a woman's body from childhood to childbearing then changing to expanded gravity from aging.

Selected Works by Kent Ipsen



The Peninsula Glass Guild and Charles H. Taylor Arts Center were honored to exhibit artwork by the late Kent Ipsen. Kent Forrest Ipsen was one of Harvey Littleton's first students at the University of Wisconsin, and became a pioneer in cast glass art. At the Virginia Commonwealth University School of Arts, Kent chaired the crafts department and founded the highly respected glass program. He passed away February 19, 2012 at age 79.

The PGG and CHTAC would like to express their gratitude to the Ipsen family for sharing his treasured artwork with the community.

Silent Auction 2012

The Peninsula Glass Guild holds a silent auction during the opening reception for the juried exhibition. Members have been very generous each year in entering artwork to be auctioned. The proceeds for each successfully auctioned piece are divided 40% to the artist, 40% to the guild and 20% to Charles H Taylor Art Center. This year the auction raised \$2169 for the guild to fund the Educational Scholarship Awards for 2013. The guild awarded three \$500 awards in 2012, and with ongoing support from both the artists and the community; our scholarship program should continue to grow. Many thanks to all who participated!

Visual Arts Center Tidewater Community College 9th Annual Open House

340 High Street
Portsmouth, VA 23704
www.tcc.edu/vac/

Saturday February 23, 2013
10 am until 1 pm

- tours
- faculty, staff & students answering questions
- financial aid officer on site
- demonstrations in glassblowing & multimedia labs
- activities in photography, computer graphics, drawing, painting and pottery studios
- raffle prizes
- art library
- *Leigh Anne Chambers & Jayson Lowery* exhibition
- loads of literature: curriculum guides, fact sheets, 340 High Street magazines, exhibition calendars, and art supply lists
- refreshments

Recent Guild Workshops

Hot Casting and Mold Making Paul Marioni December 4 & 5, 2012

Participating members spent the first day creating patterns and observing a demonstration on how to prepare a plaster mold. On the second day students used their patterns to prepare sand molds for hot casting.



Paperweights Ed Francis, Heather Sutherland December 8, 2012

Ed Francis, associate professor of art/glass at the Visual Arts Center of Tidewater Community College brought his portable hot shop to the opening reception of the juried exhibition. People of all ages tried their hand at manipulating that hot glass. There may have been some future students in the crowd!

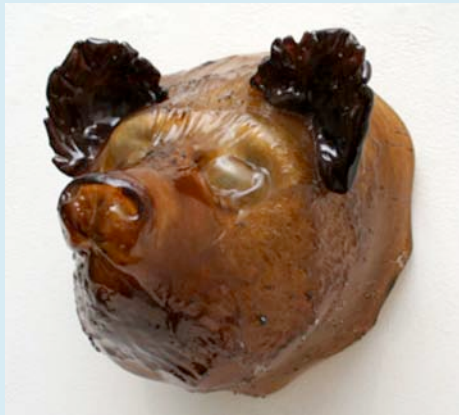


**Beginning Hot Glass Sculpting
Grant Garmezy**

Chrysler Museum of Art
Glass Studio
745 Duke Street, Norfolk
April 20-21, 2013

Check the studio website for other classes and workshops.

<http://www.chrysler.org/about-the-museum/glass-studio/>



**Honey Bear
Grant Garmezy**

Cristallo Art Center

Oyster Point Business Centre
11835 Canon Blvd., C108
Newport News, VA 23606
(757)596-3551

Tuesday – Friday 10am-5pm
Saturday 10am-4pm

Glass Sale

**20% to 30% off Stained Glass and
Fusing Glass**

When:

Thursday thru Saturday
February 28th, March 1st & 2nd

Time: 10:00am-5:00pm

Classes and Workshops

For details on class schedule and the current gallery show, visit www.cristalloartcenter.com



Future Workshops

**Free for PGG Members
Workshop for Heron Project
Saturday, March 2 10am-3pm
Cristallo Art Center**

Ali Rogan

Members can bring glass they would like to use for this donation and I will be assisting them with making work. If they wish to make a mold, bring in a model and I will help them with the investment process, and do the firings (free) for the finished work for members also. If they need glass to make their project, my scrap fusing glass is free, otherwise they can purchase needed glass at wholesale price to complete their work for the Heron Project.

Call to sign up: (757)596-3551 or email: aernglass@aol.com

Please see the Call to Artists information attached to this newsletter. This document discusses the Heron Project and the guidelines for creating your artwork for this public art project.

**Experimental Glass Casting
Jude Schlotzhauer
Arrowmont School of Arts and Crafts**

Gatlinburg, Tennessee

July 14 – 20

www.arrowmont.org

This workshop will explore a wide variety of possibilities for casting glass in the kiln. The class will start with waxes, clay and found objects. Students will work with both sand molds and plaster molds; create silicone molds for making multiples; explore the use of metals as both colorants and inclusions, by sewing, weaving wrapping metal wire and parts; combine pot melts and other hot and warm pattern making techniques with the casting process. The class will also cover creating glass components – sawing, layering, rearranging, attaching, reinvesting and remelting them to create new and more complex forms. The addition of other materials to the glass casting will be discussed and encouraged.

Member News

THE GLASS SPOT in Richmond

PGG Member **Chris Skibbe** teaches classes and lessons at his studio.

Intro to Hot Glassworking

Intro to Glassblowing I

Private Lessons (Beginner-- Advanced)

Visit THE GLASS SPOT online:

<http://www.richmondglassspot.com/>

Cathy-Jo Ramsey and fellow artist Anne May are exhibiting in the lobby of the new Pretlow Library in Norfolk.

Debra Dowden-Crockett's work has been featured in a book just released called "Flowers in Art: Contemporary International Artists" and will appear in the book "500 Art Necklaces" due to be released in July 2013. Debra also had work featured at the SOFA Art & Design Show in Chicago this past November and will be showing her glass bikini entitled "Dangerous Beauty" at the James Renwick Alliance-Smithsonian during Spring Craft Weekend in April.

Grant Garmezy

- Glass sculpting demo and lecture at VCU Feb 12th 5-8pm
- Show at Gloucester Arts on Main, March 2013
- Show at Quirk Gallery, Richmond VA, April 2013
- Show at Idle Wild House, Salem NC, May 2013
- Glass Sculpting Demo, Chrysler Museum of Art Glass Studio, Norfolk VA, July 17th 7-10pm
- Upcoming glass commissions in Savannah GA and Memphis TN 2013. Check out pictures on Grant Garmezy Glass on Facebook or visit www.grantgarmezy.com

"Try to put your vision into reality" is good advice for everyone. It seems to be the theme for The Peninsula Glass Guild 25th Anniversary Juried Exhibition (through January 20, 2013). In a display of more than 100 visions come to life in glass, what first appeared in the artist's mind's eye has been skillfully translated for us to see. We see galleries filled with a universe of artistic vision. 43 glass guild members have crystallized a depth of human emotion into reality through glass art using their minds, their hearts, their talent and technical expertise.

"Try to put your vision into reality" is a viewpoint Seattle-based Juror Paul Marioni, an innovator in the glass world, recently shared with the glass artists. Wikipedia says Marioni, inspired by his dreams, pushes his techniques to their limits, and redefines what is possible. This exhibition, likewise, stretches limits until they break. Upon entering the arts center, the "hostess" at the door is not cold, hard glass but a soft, warm madonna cuddling an infant—a reminder of the reason for the season.

Excerpt from *A Universe of Artistic Vision* by Fran Ward, Veer Magazine
Entire article attached to this newsletter.

Member Meetings and Exhibits

Membership Meeting

Sunday March 31, 3pm

**Charles H. Taylor Art Center
4205 Victoria Blvd.
Hampton**

A general membership meeting and planning session.

Membership Exhibit

March 2013

**Gloucester Arts on Main
6580-B Main Street
Gloucester
804-824-9464**

A total of 19 members have committed to participating in this exhibit. Installation of artwork will be on Thursday, February 27. Participating artists may deliver their pieces during gallery hours noon-6pm Tuesday or Wednesday prior to installation. To make special arrangements to drop off work on Sunday or Monday when the gallery is closed, please call ahead. If you haven't already done so, please send a short bio and images of your work to kay.vandyke@gloucesterarts.org

Membership Exhibit

September 26-28

**Williamsburg Arts Month
2007 Legacy Hall
4301 New Town Ave
Williamsburg, VA**

The guild will be participating in one Williamsburg Arts Month event this year. The planning has just begun, so this is a preliminary description of the event. The Legacy Hall venue will be provided without cost exclusively to the guild for a gallery exhibit. The work will be installed on Thursday September 26 and will have to be removed late Saturday on the 28th or the following morning. There will be other Arts Month events and gallery openings in New Town during these days to draw crowds, and the guild will coordinate with those schedules to increase traffic through our exhibit. New Town is a new section of Williamsburg with shopping, restaurants, movie theater, galleries and residences. The guild will open our exhibit to the public with reasonable hours Thursday through Saturday and participating members will be responsible for a work shift during that time.

Fran Ward suggests a new way to promote your work. **Pecha Kucha** is a growing event now in 600 cities. Presenters prepare 20 slides in advance. At the live presentation each slide is shown and described for 20 seconds. Her presentation "Finding Order in the World: Grids and Circles" has been viewed 2500 times globally.

www.pecha-kucha.org/presentations/627

Attend the next Pecha Kucha Night March 9, at 6:00pm
New Town Art Gallery, 5140 Main St ,Williamsburg VA 23188

Check it out, and present your art at the next one. A \$3 donation to the Arc of Greater Williamsburg gets you a show and complimentary beer, wine, soft drinks, and snacks. Browse a great gallery of local talent. Relax and enjoy a unique show that can only be described as "a box of chocolates" full of creativity. For more info:

<http://www.pechakucha.org/cities/williamsburg/events/50f748524f5c295d2e000001>

Annual Membership Dues (covers July 1 – June 30)

Pay Membership Fees at a meeting or mail to:

Treasurer, Peninsula Glass Guild

114 Wind Forest Lane, Yorktown, VA 23692

- Individual \$25.00
- Couple \$35.00
- Senior/student \$18.00
- Couple (sr/student) \$25.00
- Business \$50.00

Call to Artists – City of Chesapeake Heron Project

The Peninsula Glass Guild is pleased to announce a unique opportunity to participate in a public works art project. We have been asked by the City of Chesapeake to create a Heron as part of their art program to represent the City symbol.

This is a great opportunity to participate with the group in the public art project and share in this one of a kind opportunity. **All artists working in glass** are invited to participate and will be acknowledged formally at the Heron unveiling ceremony at City of Chesapeake City Hall, the final home of our Heron Project. This is a high profile project and we expect it to be covered by the press. We expect this to be an excellent opportunity to the Guild and our members to gain experience in working with a public art project, gain valuable exposure, and be acknowledged as a participant all while having fun and working together.

Please see entire announcement attached to this newsletter.



Reflections of Nature Glass Exhibit

Norfolk Botanical Garden

May 1 – August 18, 2013 Glass sculpture by [Craig Mitchell Smith](#)
A collection of thirty glass sculptures that artist Craig Mitchell Smith has created exclusively for Norfolk Botanical Garden in celebration of their 75th anniversary.

Beth Lipman will be working live in the Chrysler Museum of Art Glass Studio March 16-24, and the work she will be producing, *Adeline's Portal*, will be on display at the Moses Myers House throughout 2013.

Please see the flyer attached to this newsletter detailing workshops available at the **Tidewater Community College Visual Arts Center** through Workforce Development.

PGG FACEBOOK Page

Check out the guild's new Facebook page—be sure to leave a message and share photos!
<http://www.facebook.com/pages/Peninsula-Glass-Guild/247854201903967>

Mission Statement

The Peninsula Glass Guild is organized for educational, artistic and charitable purposes. The goals of the guild include the sharing of artistic ideas, expanding knowledge about glass, and stretching artistic imaginations through exploration of glass as an artist's medium. In order to promote an awareness of glass as an art form, the Guild annually donates either glass art, educational glass related materials, or grants to a chosen, public, non-profit organization. Donated glass artwork is most often designed and created by guild members in a collaborative, educational effort. The guild has also contributed to the purchase of glass artwork for The Chrysler Museum and The American Theatre.

PGG

Established in 1986 to promote studio glass and provide a forum for glass artists to gather for educational and support purposes.

We're on the Web!

www.peninsulaglassguild.org

www.facebook.com/pages/Peninsula-Glass-Guild/247854201903967

PGG Officers

President:	Debra Dowden-Crockett	president@peninsulaglassguild.org
Vice President:	Ali Rogan	vp@peninsulaglassguild.org
Treasurer:	Dan Smith	treasurer@peninsulaglassguild.org
Corresponding Secretary:	Heather Hartle	corsecretary@peninsulaglassguild.org
Recording Secretary:	Holly Weber	recsecretary@peninsulaglassguild.org
Board Member:	Carolyn Riley	boardmember1@peninsulaglassguild.org
Board Member:	Cathy Jo Ramsey	boardmember2@peninsulaglassguild.org
Board Member:	Erna Cook	boardmember3@peninsulaglassguild.org
Student Representative:	Nate Avery	boardmember4@peninsulaglassguild.org



Call to Artists – City of Chesapeake Heron Project



The Peninsula Glass Guild is pleased to announce a unique opportunity to participate in a public works art project. We have been asked by the City of Chesapeake to create a Heron as part of their art program to represent the City symbol.

The Guild has been given a fiberglass heron onto which we will affix glass pieces created by our members. Our Committee has chosen blue and green as the color scheme. These colors are easily available regardless of your style of glass work. As this sculpture will be lit internally; pieces should be transparent and should transmit light well. The assembly process involves drilling various sized holes into our fiberglass form. Each submitted piece should have a corresponding (male) end that will be inserted into the designated hole (female) of the heron form. The hole sizes will be $\frac{1}{2}$ ", 1", 2", 2 $\frac{1}{2}$ ", and 4". Please design your submissions to correspond to one of these sizes. Pictures of samples are provided below.





The left side of this piece will be inserted into heron form





The right side of this piece will be inserted into the heron form.

This is a great opportunity to participate with the group in the public art project and share in this one of a kind opportunity. **All artists working in glass** are invited to participate and will be acknowledged formally at the Heron unveiling ceremony at City of Chesapeake City Hall, the final home of our Heron Project. This is a high profile project and we expect it to be covered by the press. We expect this to be an excellent opportunity to the Guild and our members to gain experience in working with a public art project, gain valuable exposure, and be acknowledged as a participant all while having fun and working together.

Opportunities range from contributing glass pieces to final assembly and installation. Come join us! Interested artists should contact Josh Solomon at joshoulman@hotmail.com for more information on participating.

A UNIVERSE OF ARTISTIC VISION

Fran Ward

“Try to put your vision into reality” is good advice for everyone. It seems to be the theme for **The Peninsula Glass Guild 25th Anniversary Juried Exhibition** (through January 20, 2013). In a display of more than 100 visions come to life in glass, what first appeared in the artist’s mind’s eye has been skillfully translated for us to see. We see galleries filled with a universe of artistic vision. 43 glass guild members have crystallized a depth of human emotion into reality through glass art using their minds, their hearts, their talent and technical expertise.

“Try to put your vision into reality” is a viewpoint Seattle-based Juror Paul Marioni, an innovator in the glass world, recently shared with the glass artists. Wikipedia says Marioni, inspired by his dreams, pushes his techniques to their limits, and redefines what is possible. This exhibition, likewise, stretches limits until they break. Upon entering the arts center, the “hostess” at the door is not cold, hard glass but a soft, warm madonna cuddling an infant—a reminder of the reason for the season.

Each gallery has an artistic layout displaying artist viewpoints manifest into reality via processes ranging from blown, carved, cameo, cast, painted, flame-worked, fused, leaded, and stained glass, to Clay McGlamory’s neon *Hot Mess*. Imaginative, interesting combinations and permutations use additional materials and concepts.

The subject matter throughout is Real and/or Imagined. Objects from cultural anthropology include Jude Schltzhauer’s cave paintings of *Spirit Animals* and her *Reliquary Boxes*, Julia and Robin Rogers’ *Crazy Hawk* and *Nomad*, and Phillip Nolley’s *Ritual Vessel*. Object displays within the galleries are an example of putting vision into reality. Items have been arranged with meaningful similarity and are pleasing to the eye.

This year, characters seem to have been birthed into glass from the fantasy genre, combining the real and the mythical, spanning time and space, creating a new and believable universe. There is a big game hunters’ trophy wall of critter heads mounted on placards including Charlotte Potter’s *Hybrid Gazelle/Antelope*, Nate Avery’s *Frozen Avenger*, and Grant Garmezy’s *Honey Bear* which appears to have a coating of hard candy.

In another location, an opaque reptile and a clear glass bug eye each other. Benjamin Smith’s *Who’s Looking at Who?* encased in an acrylic vitrine appears to be on loan from the Harvard Glass Flowers.

Large works attract attention immediately, yet there are dozens of smaller works of art to be discovered as a reward for the attentive viewer. Marioni acknowledges the excellent

object display. Gallery manager James Warwick Jones credits Ali Rogan for the arrangement. Each piece appears special not only to the artists who treasure them but also to us viewers.

Two galleries feature individual artists. The **Kent Ipsen Memorial Exhibition** is dedicated to the work in HONOR, RECOGNITION and RESPECT of KENT IPSEN (1933-2012), a pioneer in cast glass art and founder of the respected glass program at VCU's School of Arts. His work was once described as "frozen music." It is his madonna at the entrance. In the gallery are the famous gigantic hands that he created. His range and diversity are reflected in 24 pieces of cast glass, blown glass, ceramic vessels, bowls, busts, and renderings, as well as archival newspaper articles and photos of the artist at work. His work has exhibited at the Smithsonian American Art Museum, Brooklyn Museum, the Corning Museum of Glass and the Vatican Museum.

"The Genesis of Women: Glass by Kathy Little" is the heart of the show pulsing with artistic life blood. Centrally located spatially, the one-person exhibition (the entitlement for winning the top award in last year's PGG competition) courses with heart images sluicing through arterial ribbons swirling around white spheres. The stunning stained glass window (the *only* stained glass in the show) connects her many representations of women in a variety of glass forms with the art by all the other guild members.

Marioni found his passion in glass and advises readers of *Veer*: "Find something **you** want to do in your life, and do it! It might not be easy, but so many people look back and regret they didn't live the life they wanted." It connects with his first piece of advice: **"Try to put your vision into reality."**

BASIC INFORMATION

Name _____ (Prefix) _____ First _____ Middle _____ Last _____ (Suffix) _____

Last Four Digits of SSN _____

This ensures CEU's are applied to the correct student record and transcripts accuracy.

Former Name _____

Date of Birth _____

EMPIL ID _____

CONTACT / EMERGENCY CONTACT INFORMATION

Phone _____

County _____

Street / PO Box _____

City _____

State _____

Zip _____

Current Residence (If different from above) _____

 Have you lived in Virginia longer than 12 months? Yes No

If No where did you live? _____

Your Email _____

Emergency Contact _____

First _____

Last _____

Relationship _____

Emergency Contact Phone Number _____

EMPLOYER

Employer _____

Employer Phone _____

ETHNICITY

Racial / Ethnicity _____

 American Indian/
Alaskan Native

 Asian/
Pacific Islander

 Black

 Hispanic

 White

 Other _____

CITIZENSHIP

 Are you a U.S. Citizen? Yes No

Is English Your Native Language?

 Yes No

**IF YOU ARE NOT A CITIZEN ANSWER
THE QUESTIONS BELOW**

Country of Citizenship _____

Type of VISA You are Requesting _____

Permanent Residence _____

Temporary Status _____

Temporary Status Expiration Date _____

MILITARY

Current Status _____

 None

 Active
Duty

 Active
Reserves

 Inactive
Reserves

 Retired

 Military

 Spouse

 Veteran

Date Entered _____

Dependent Child _____

Branch _____

COURSE SELECTION

Class #	Course ID + #	Section	Dates	Course Title	Times	Location	Cost	CEU's

Applicant's Signature _____

Date _____

This institution promotes and maintains educational opportunities without regard to race, color, sex, ethnicity, religion, gender, age (except when age is a bona fide occupational qualification) handicap, national origin or other non-merit factors. Employer, date of birth, social security, sex, and race information are optional and used for research, reporting and management of student records.

Payment Method _____

 Check

(Payable to TCC)

Do not Email or Fax Credit Card Number, Call Workforce Development to Give it.
 Money Order

 VISA

 Mastercard

 Military Authorization

Cardholder's Name _____

Expiration Date _____

Card's Last 4 Digits _____

Signature _____

Credit Card Number _____

SSN _____

Disclosure of your social security number is not required at this time, but it is highly recommended. The VCCS will only use your social security number in accordance with federal and state reporting requirements, and for identification purposes within the VCCS.

NEW ART SERIES

ABOUT THE SERIES

Workforce Development at Tidewater Community College is proud to announce a new partnership with the Visual Arts Center to offer non-credit courses to those interested in the arts.



LOCATION

TCC Visual Arts Center, 340 High Street, Portsmouth, VA 23704

CLASSES INCLUDE

INTRODUCTION TO ENCAUSTIC PAINTING (2 weeks)

HOW TO USE A MAC (3 weeks)

INTRODUCTION TO STAINED GLASS (6 weeks)

DEVELOPING A BUSINESS PLAN FOR ARTS AND CRAFTS (6 weeks)

MOLD MAKING FOR GLASS CASTING (6 weeks)

MOLD MAKING AND SLIP CAST CLAY (5 weeks)

PHOTOSHOP CS6 (6 weeks)

ILLUSTRATOR BASICS: what you need to know about Adobe Illustrator CS6 (6 weeks)

ILLUSTRATION: DIGITAL AND TRADITIONAL (6 weeks)

HTML BASICS (2 weeks)

CSS BASICS (2 weeks)

Eloise Shelton-Mayo, Sundays, Feb.16, 24. Cost \$99

Mike Ryan, Saturdays, Feb.16-March 2. Cost \$75

Beth Netts, Saturdays, Feb.16-March 20. Cost \$225

Beth Netts, Fridays, Feb.15-March 29. Cost \$99

Ed Francis, Saturdays, Feb.16-March 30. Cost \$225

Carrie Spencer, Saturdays, Feb.23-March 30. Cost \$199

Bryan Myhr, Fridays, Feb.16-March 29. Cost \$150

Ron Neale, Saturdays, Feb.16-March 30. Cost \$150

Ron Neale, Saturdays, Feb.16-March 30. Cost \$150

Heather Boone, Fridays, March 22 & March 29. Cost \$150

Heather Boone, Fridays, April 19 & April 26. Cost \$150

CEU(Continuing Education Units) Certificates are available for all courses offered!

Registration Process: Sign up in person at the Workforce Development Center located at the Suffolk Campus OR go to the Workforce Development Website and download the application form, fax it and OR call WFD and pay over the phone.

Contact: Shaina Yowell@822-1164