

Newsletter Winter 2015



UPCOMING EVENTS

Sunday March 1

Chrysler Museum Glass Studio

745 Duke Street Norfolk

Guild Membership Meeting 2:30-3:30pm

Guild member Emilio Santini will be the visiting artist at the Chrysler Museum Glass Studio, working 11am-2pm with a narrated public demonstration at noon. Come to watch Emilio work and then stay for his public lecture at 4:00pm. Emilio will also be working at the glass studio with public hours Thursday February 26 through Saturday February 28, 10am-1pm and 2:30pm-5pm each day.

Sunday April 19

Chrysler Museum of Glass

One Memorial Place Norfolk

Chrysler Hall

215 St. Paul's Blvd Norfolk

Guild members will meet in Huber Court at Chrysler Museum at 1pm to view the exhibit Chihuly in the Garden. At 3pm interested members will attend the Virginia Symphony production of Bluebeard's Castle at Chrysler Hall with sets created by Dale Chihuly.

See www.virginiasymphony.com for details. Tickets for a block of seats will be reserved for interested members to attend. We will discuss the details at the March 1 general meeting.

Saturday May 2

Chrysler Museum Glass Studio

745 Duke Street Norfolk

Hot Casting Workshop at Chrysler Museum Glass Studio, 5:30-8:30pm.

An opportunity for members to hot cast into sand molds prepared from their own models. Details on cost and mold preparation opportunities to follow.

Sunday in June

Date and time TBA

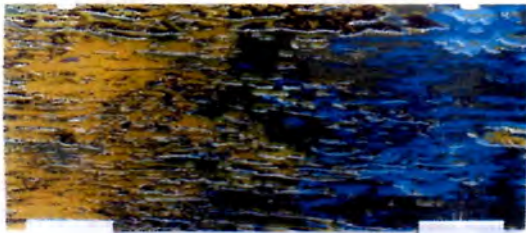
Annual pot luck picnic in the gardens hosted by Bill and Linda Pinkham. Watch your inbox for further details this spring.

The Peninsula Glass Guild
27th Annual
Juried Exhibition
Armstrong & Chapman Galleries

Fluid Variations:
Recent Works in Glass by
Clay McGlamory

The Charles H. Taylor Arts Center
4205 Victoria Boulevard
Hampton, Virginia
757-727-1490

December 13, 2014—January 25, 2015



Clay McGlamory
silkscreened enamels on glass

□ **Artist's Statement**

Whether employing large format printing on acrylic or glass sheets with backlighting to create installations or working intimately with book arts on paper, I am always working to push the aesthetic envelope. Minimalism influences my use of materials and Pop Art influences my use of color. Current events are the driving idea behind my contextually-loaded pieces. These works reflect my thoughts on our world, often critical and cynical. Themed trade portfolios and invitational projects often inspire these pieces. My abstract works are a continuation of my exploration into the formal qualities of color, light, shape and pattern, which I have been building upon over many years.

Clay McGlamory: Brief Bio

Clay McGlamory has a BFA from Old Dominion University and an MFA from Norfolk State University. He has taught printmaking and design courses for ODU as an Adjunct Assistant Professor since 1999 and has taught printmaking and book arts for the Governor's School for the Arts since 1994. He has had 15 solo exhibitions, his work has been included in over 120 national and international juried and invitational exhibitions, has won awards for printmaking, book and mixed media works, and his work is in numerous public and private collections.

Peninsula Glass Guild 27th Annual Juried Exhibition

Michael Rogers, Juror

Awards

Best In Show 2014
Charlotte Potter



Threshold

2nd Place →

Julia & Robin Rogers
Virility



↑ 3rd Place Kristi Totoritis
Perfect Honeymoon



**↑ Hampton Arts
Commission Award**
Emilio Santini
Dreams of Lost Desires

Additional Awards

Award of Excellence

Fran Ward—*Roy G Biv*

Ali Rogan - *Gorgon Fanfare III*

Honorable Mention

Hollister Weber—*Hundertwasser Visits Whoville*

Grant Garmezy—*Dogwood Cow Skull*

Hannah Kirkpatrick—*Keys To Past*

Heather Hartle—*Focus*

Elizabeth Netts—*On Edge*

Joshua DeWall—*Hatched*

Brad Pearson—*Tiki Series Marble*

Tom Vasquez—*Two Giganotosaurus Attacking
Saltosaurus*

Scholarship Awards

Hannah Kirkpatrick

Deborah Ayres

Carolyn Riley

Joan Biddle

Member Artists Exhibiting

Elaine Abrams

Nate Avery

Deborah Ayres

Emily Bartelt

Deborah Bass

Sabrina Cordovana

Joshua DeWall

Neil Duman

Gayle Forman

John Forsythe

Grant Garmezy

Philip Guilfoyle

Van Eric Harned

Heather Hartle

Hannah Kirkpatrick

Dan Kistler

Clay McGlamory

Lisa S. Mosser

Richard Nelson

Beth Netts

Ronald Parsons

Bradley Pearson

Bill Pinkham

Charlotte Potter

Cathy-Jo Ramsey

Carolyn Riley

Ali Rogan

Julia Rogers

Robin Rogers

Emilio Santini

Jude Schlotzhauer

Robin Short

Chris Skibbe

Jessie Sommer

Margot Thigpen

Kristi Totoritis

Tom Vasquez

Inga Wade

Fran Ward

Hollister Weber

JUROR'S STATEMENT

I appreciated this opportunity to see the variety of art being made with glass here in The Charles H Taylor Art Center. As a Juror, I found myself in the difficult position of trying to define "quality" inherent in the works of art. The choices were difficult but my criteria was simple. I wanted to be surprised and so looked for evidence of risk taking that led to bravely unique works. Another concern was how successfully material and process fed into the content of the work. I always look for and admire excellent craftsmanship that leads to well resolved work. Charlotte Potter's work, "Threshold", stood out as bravely unique involving risk, Emilio Santini's "Dreams of Lost Desires" was like a softly poetic visual whisper. Julia and Robin Rogers work stood out as the most cohesive body of work in the exhibition, and I found it delightful and lyrical. Kristi Totoritis's work, "Perfect Honeymoon" is intricately executed, a mysterious hybrid of delicate imagery and sculptural presentation. The abstraction embodied in the works of Fran Ward and Ali Rogan was contemplative and strong.

Congratulations to all on the sincerity of your best efforts and the diversity of your expressions.

"TO BE OR NOT TO BE"

Michael Rogers, the juror for the 27th Peninsula Glass Guild Annual Juried Exhibition taught a valuable workshop December 16th & 17th at the Chrysler Museum Glass Studio. He offered a new type of design workshop to assist artists in finding their "voice" using a variety of materials and techniques enabling an artist to transform objects from the ordinary into the extraordinary. Fran Ward generously created Ekphrastic Poetry (a poem to describe a visual work of art) for each work of art created in the workshop. Please enjoy the following journaling of the workshop.

Carolyn Riley shared some thoughts on the workshop:

Michael Roger's workshop was designed to help artists find inspiration for their work. Six members of the guild and one Chrysler Studio assistant participated in the workshop. We began by filling a suitcase with all kinds of things that had personal meaning. Be like a "kid in a candy store" when you pack your suitcase, Michael Rogers told us, pick up stuff from around your house, garage, workshop, purse, wherever. Each person came with a suitcase full of precious possessions, most of which had meaning for only us! As we unpacked our suitcases we began selecting what had the most personal meaning for each of us. It was surprising how the process led to some intense introspection and surprising associations. What we created from the contents of our suitcases became a reflection of our most powerful inner thoughts and feelings. It was amazing how different everyone's approach was to their work. Every piece made at the workshop was very personal and very unique.



CAROLYN RILEY

I made a collage of a tiny doll sitting on a pin - cushion. The pincushion was an old handmade one owned by my mother. The piece is covered with a glass bottle. It has not been completed, but I'm excited with the beginning

~Carolyn Riley

LIFE IS SHORT (original title)

LIFE IN THE SLOW LANE: GO SLOW AND SAVOR (revised title)

Based on the artwork with the same title(s)
by Carolyn Riley



The turtle.

Mother Earth.

Center of the Earth.

S l o w l y traveling through time.

A pincushion takes its time

To move the little girl

From Germany

To the scrapbook pages of my memory.

Poem by Fran Ward

BEN CARL RILEY

UNLOCKED

Based on the artwork "UNLOCKED"

by Ben Riley



I had many "found objects" and photos on the table...with two days to put something together. My goal was to do an autobiographical piece. I needed to boil things down to the specific images and objects that would say what I wanted, and symbolize my life. Michael (Rogers) helped me with this. We chose a purple padlock, an old passport, 1930's photos of my mother's school classroom and a 1970 photo of me playing cello. Most of the photos were made into glass decals, ready for the second day of the class.

John (Shield), very kindly donated a large "wonky" goblet...which I enthusiastically accepted. I purchased various sizes of glass bowls between classes. The final assembly was done by gluing it all together.

~ Ben Carl Riley

My passport to the world is my cello.

An old photo sounds chords of reminiscence

Of a family whose brothers learned

To play the strings

From our skilled music-educator father,

A music historian.

We brothers have lived our own history,

Re-assembling joyously to play at a nephew's wedding

And sadly at the memorial of our mother.

She, a collaborator to her published husband,

Joined with him to uphold standards.

My own marriage is a reflection of their shared life.

70 years is the milestone commemorated

By this extra special,

Very cool,

Personal treasure.

It touches my heart strings.

Poem by Fran Ward

ALI ROGAN

SOUL SISTERS

Based on the artwork "SOUL SISTERS"

by Ali Rogan

Soul Sisters.

Star Sisters.

Joined at the Heart.

Pulses beat together

As they have for a lifetime.

Contained forever in an image

Like Tibetan sand

From an eternal mandala.

Our lives: a labyrinth

Of Eternity.

A life of Joy, Appreciation and Love.



The Michael Roger's workshop was a very intensive cerebral approach to art making that pushed the boundaries of one's mind set beyond what is obvious to what could be possible, if you allowed yourself to explore one step further and then keep walking. We practically walked on water by the time the workshop finished....believing in the creative God that lives within ourselves.

~Ali Rogan

Poem by Fran Ward

FRAN WARD

INTERGALACTIC HARMONY

Based on the artwork

“INTERGALACTIC HARMONY”

by Fran Ward



A tower propels higher than atmosphere

Beyond imagination.

Into the stars

Past the cosmos

And into intergalactic space

Where harmony bubbles up

And captures inspiration.

Lost in space?

No.

Found in the great hereafter.

Close to divine.

Poem by Fran Ward

CATHY-JO RAMSEY

CHINCOTEAGUE

Based on the artwork "CHINCOTEAGUE" by
Cathy-Jo Ramsey

From brackish habitats we both emerge.
You, the saltwater bi-valve mollusk.
I, the Chincoteague native,
Proud of my heritage
And the environment we share.
So many come to enjoy the gift of our
birthright.
You, the succulent morsel,
In the natural state and embellished.
And I, the admirer of your very appearance.
You have become my focus,
My art,
My enjoyment.
The world is my oyster.

Poem by Fran Ward



Because of the generosity of Debra Dowden-Crockett, I was fortunate to take the class with Michael Rogers. His method of teaching us to take ordinary items that we care about and using glass bottles to incorporate them was both new and very inspirational. Fran Ward's poetry about each item and its creator was wonderful. I am so appreciative I could be part of the class with such an inspiring instructor and many talented artists! Thank you Debra!

~ Cathy-Jo Ramsey

HEATHER HARTLE



This workshop experience encouraged me to react intuitively to objects that hold memories and meaning and then use that emotion to design and create "in the moment". It was a valuable experience and one I hope to cultivate in my future work.

~ Heather Hartle



THE PILGRIMAGE

Based on the artwork "THE PILGRIMAGE"

by Heather Hartle

Painted fervently and with as much devotion
As shown by pilgrims on their knees,
My tribute to the model of the feminine divine
Stands tall and is a prayer of honor and respect
Of Mary Magdalene, her service, her life.
Not only misunderstood and misrepresented,
She endured an adult lifetime of abuse,
persecution,
And suffering
Not deserved.
She is accorded her place centuries later
In a space of beauty, contemplation, and
Meditation.
Our hearts resonate.
I understand.

Poem by Fran Ward

□

MICHAEL ROGERS

Based on MICHAEL ROGERS

The Facilitator

The Director

The Co-Conspirator

The professional Model

Not on the Catwalk

But at the head of the class

Explaining

De-mystifying by example.

Taking all the time in the world

To show that that was the precise amount of time allotted each

To open our suitcases and hold forth artifacts

From ancient aspects of ourselves,

Explaining the circumstances from which each piece had been
excavated

And grouping the notions in a meaningful treatise.

One-by-one the Magnificent Seven followed suit.

He patiently watched each bucking bronco emerge from the suitcases,

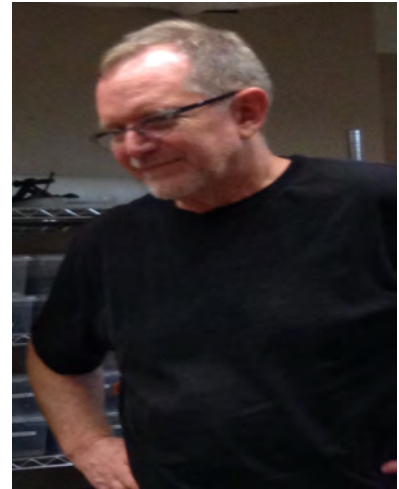
Waited for a mustang to wear itself down,

Reassured horse and rider that they were trainable,

And allowed the untamed

Time to saddle up

And ride like the wind.



□ Both--happy, content and complete.

By workshop's end,

Fourteen hours passed

Simultaneously too quickly and too slowly.

Glass techniques fused their way

Into the conceptual masterpieces of personal significance.

Lamp work, etching, glass blowing, vitreous painting, top
popping and UV gluing

Were suggested

And assisted

To result

In an eloquent dimensional magnum opus times seven.

Mutual respect, admiration and compassion

Bonded all

For a treasured memory of merit, worth and value.

Priceless.

Poem by Fran Ward

The Naughty Seven



The class was an exciting exercise and one that we can always return to as a source for inspiration in our work. I think each of us will return again and again to Michael Rogers' methods for unlocking our own doors to creative self-discovery. Thank you, Michael!

~ Ben and Carolyn Riley

Upcoming classes at the Chrysler Glass Studio

2015 Guest Instructor Intensive Workshops

RANDY WALKER AND ROSS RICHMOND

GLASS SCULPTING JUNE 16–21 \$950 FOR MUSEUM MEMBERS / \$1,150 ALL OTHERS
MIN 9/ MAX 12

Learn unique techniques and approaches to both solid- and blown-glass sculpting from two nationally renowned instructors in this concentrated course at the Chrysler. Randy and Ross will highlight the true nature of glass and how to let its physical properties inform individual styles in sculpting it, giving students freedom to explore processes and the potential of the material. The instructors will provide daily demonstrations, teaching the use of various torches, garage, and bit work, and students will also make personalized sculpting tools.

Sketchbooks are mandatory.

PREREQUISITE: Two years of glassblowing experience are required._

RANDY WALKER is a 1981 graduate of Oklahoma State University; he now lives in Bellingham, Washington. Randy started as a student at Pilchuck Glass School in 1989 and since 1990 has worked every summer for Pilchuck as staff, a faculty member, or craftsman. For 16 years he was a principal member of the William Morris blowing team, helping to make some of the world's most innovative glass works. Randy's creative natural forms are based on his lifetime of travels and scientific studies combined with years of extensive education and work in glass sculpting. Randy has taught workshops in Canada, Japan, New Zealand, and across the United States, and



Bean Pod 2008



ROSS RICHMOND began working with glass in 1991 at the Cleveland Institute of Art. He is considered one of the top glass sculptors in the field today, having worked with and for some of the greatest glass and non-glass artists including William Morris, Jane Rosen, Preston Singletary, and Dale Chihuly. Ross' pieces often combine figurative elements with symbolic objects. His work currently shows at a number



CARMEN LOZAR

JULY 21–26 FLAMEWORKING FANTASY AND OTHER GLITTERY THINGS \$850 FOR MUSEUM MEMBERS / \$1,000 FOR ALL OTHERS MIN 6 / MAX 10

Discover how to use flameworking to express your own personal vision in this weeklong class. Carmen will teach not only borosilicate rod and tubing basics, color techniques, and assemblage using a kiln, but also how to imbue glass depictions of the natural world with emotion and creativity. Use flame shop skills to explore animal nature, both human and beast, by creating self-portraits ranging from Little Red Riding Hood's wolf to a creature of your own design. In this class, you'll create sculpture that is both compelling and fantastical, so bring your images, ideas, and imagination.

PREREQUISITE: None, though some glass experience is preferred.

CARMEN LOZAR shows her work throughout the United States and is represented by major galleries in Seattle and Chicago. She lives in Bloomington-Normal, Illinois, where she maintains a studio and is a member of the art faculty at the Ames School of Art at Illinois Wesleyan University. Carmen earned her M.F.A. from Alfred University in 2003, and has been awarded two residencies and been named "Rising Star of the 21st Century" by The Museum of American Glass. She has been the featured demonstrating artist at annual Glass Art Society conferences and the keynote speaker and demonstrator for the International Flameworking Conference in Salem, New Jersey. She has taught internationally at institutions such as Penland School of Crafts, Pilchuck

Charlotte Potter

Chrysler Museum of Art Glass Studio Manager & Programming Director

745 Duke Street, Norfolk, VA 23510

cpotter@chrysler.org Office: 757.333.6286 Cell: 757.737.0251

www.chrysler.org

To sign up click here:

<https://reservations.chrysler.org/Info.aspx?EventID=120>

Or call: 757 333 6299

Member News

Deborah Marcombe

Deborah and her son, Kieren Marcombe, plan on having a Mother and Son show this spring. Date to be confirmed later. If anyone would like to become one of Kieren's patrons, the cost is \$200 and it guarantees an invitation to the exhibition and one of the pieces of artwork to take home. Please contact Deborah: debontheweb2011@yahoo.com (for more information)



Cristallo Art Center

Cristallo Art Center
Oyster Point Business Centre
11835 Canon Blvd., C103
Newport News, VA 23606
(757)596-3551
www.cristalloartcenter.com

For information on classes call (757)596-3551 or email: info@cristalloartcenter.com

Cristallo Art Center is a multifunctional facility, providing instruction in a variety of glass art techniques, from fusing to casting, lampworking to kiln-forming, painting on glass, photographic techniques on glass and other art forms. Supplies for fusing glass and stained glass are available at the studio

Member Websites

Ali Rogan: www.cristalloartcenter.com

Kathy Little: www.klittleglass.com

Cathy Jo Ramsey: www.glass-imaginings.com

Kristi Totoritis: www.kristitotoritis.com

Chris Skibbe: www.richmondglassspot.com

Nate Avery: www.nateavery.com

Debra Dowden-Crockett: www.glassinbloom.com

Lisa Mosser: www.mosserbeads.com

Grant Garmezy: www.grantgarmezyglass.com

Susan Welteroth: www.eyecatchersglass.com

Hannah Kirkpatrick: hannahkirkpatrick.com

Brad Pearson: www.bradpearsonglass.com

Charlotte Potter: www.charlottepotter.com

Beth Barclay: www.barclayglass.com

Heather Hartle: www.engravedinspiration.com

TeresaPhillips: www.chileansculptor1.com

Joan Biddle: www.joanbiddle.com

Margot Thigpen: www.margotmay.com

Josh DeWall: www.joshuadewallglass.com

Robin Short: www.rbscreations.com

Julia Rogers: www.juliacrogers.com

Jude Schlotzhauer: www.judeglass.com

Robin Rogers: www.robinmrogers.com

Please send your articles for publication in the next newsletter by **October 1, 2015**. Share what's going on with guild members. Tell us about an interesting experience you've had. We want to know about upcoming events and classes, interesting things to see and do, information about our members including shows, awards or special acknowledgements, your thoughts, insights and feedback on guild events, and information about related organizations. Please send info to corsecretary@peninsulaglassguild.org

or to PO Box 2134, Yorktown, VA 23692

Treasurer's Report

<u>2014</u>		<u>2015</u>	
61 Members		58 members	
14 New Members		9 New Members	
47 Annual Show Exhibitors		41 Annual Show Exhibitors	
Savings Account	5341.60	Saving Account	5344.88
Checking Acc't	<u>4333.50</u>	Checking Acc't	<u>2027.52</u>
Total	9675.10	Total	7372.40

The Guild has not made money or broken even the last two years, even though membership and participation is up. Three factors contribute to the decline in funds:

Scholarships were doubled from \$1000 to \$2000

Grant money dried up

The Legacy Hall events did not have good sales

The Annual Show is not only the focal point of the Guild, it is where most of the financial action occurs. This is when most dues are paid and show entry fees collected. Dues and fees plus the Guild's percentage from the silent auction and artist sales commissions make up the bulk of the Guild's income. Of course, the Annual Show accounts for the majority of our expenses. A barebones show with a local juror costs \$4100 which is just about what the Guild takes in during the show. Bringing in a name juror adds costs of between \$900 - \$1200 (airfare, lodging, meals, transportation).

Known Expenses:		Income:	
Scholarships	2000	Dues	1200
Awards	1200	Show Fees	1000
Juror	500	Silent Auction	1500
Programs	200	Commissions	<u>400</u>
Ribbons/Cert	125	Total	4100
Flowers	<u>75</u>		
Total	4100		

Submitted by Dan Smith, Treasurer

From the Guild President

As a non-profit organization, the Peninsula Glass Guild uses the income generated and any surplus funds to further the goals set by our Mission Statement. In years past the guild has been fortunate to receive grant funds from the Hampton Arts Commission to help us achieve our goals. This grant money is no longer available, but the board will be exploring other grant funding opportunities. Fortunately, the guild received IRS 501c3 status in 2014, which will make contributions to our organization more attractive to perspective donors. Your board will be examining ways to attract donations as well as grant funding, and of course suggestions from the general membership are always welcome. The goal will be to responsibly balance the budget without impacting the benefits to our membership and our community, while keeping our sites on public awareness of glass art, education, scholarship and charitable contributions.

~ Heather Hartle

Suggestions from a Guild Member

At the Guild Meeting on 25 January treasurer Dan Smith mentioned that the future financial picture did not look so good. The fact that we are now a non-profit organization and can receive support from donors is encouraging. I suggested that maybe we might try to get more exposure for the Guild and thus possibly reach more donors...so...I suggested "putting the show on the road". Maybe the show might consist of only two or three pieces protected in acrylic boxes. These could be displayed in theater lobbies, stores, malls, banks, corporate headquarters, etc and anyplace where potential donors might be. Next to the display would be information about the Guild and "tailback" forms with request for tax free contributions. Donors and contributors names would be would be listed on the program for the openings. This is how many organizations support their activities. The contributions may be small but the objective is to garner many of them.

~ Dan Kistler

Mission Statement

The Peninsula Glass Guild is organized for educational, artistic and charitable purposes. The goals of the guild include the sharing of artistic ideas, expanding knowledge about glass, and stretching artistic imaginations through exploration of glass as an artist's medium. In order to promote an awareness of glass as an art form, the Guild annually donates either glass art, educational glass related materials, or grants to a chosen, public, non-profit organization. Donated glass artwork is most often designed and created by guild members in a collaborative, educational effort. The guild has also contributed to the purchase of glass artwork for The Chrysler Museum and The American Theatre.

PGG

Established in 1986 to promote studio glass and provide a forum for glass artists to gather for educational and support purposes.

Pay Membership Fees at a meeting or mail to:

Treasurer, Peninsula Glass Guild

P.O. Box 2134, Yorktown, VA 23692

- Individual \$25.00
- Couple \$35.00
- Senior/student \$18.00
- Couple (sr/student) \$25.00
- Business \$50.00

We're on the Web!

www.peninsulaglassguild.org

www.facebook.com/pages/Peninsula-Glass-Guild/247854201903967

Membership Dues can also be paid using PayPal on our website!

PGG Officers for 2014-2015

President:	Heather Hartle	president@peninsulaglassguild.org
Vice President:	Ali Rogan	vp@peninsulaglassguild.org
Treasurer:	Dan Smith	treasurer@peninsulaglassguild.org
Corresponding Secretary:	Doreen Smith	corsecretary@peninsulaglassguild.org
Recording Secretary:	Holly Weber	recsecretary@peninsulaglassguild.org
Past President:	Debra Dowden-Crockett	boardmember#1@peninsulaglassguild.org
Board Member:	Carolyn Riley	boardmember#2@peninsulaglassguild.org
Board Member:	Robin Short	boardmember#3@peninsulaglassguild.org
Student Representative:	Violet Galante	boardmember#4@peninsulaglassguild.org